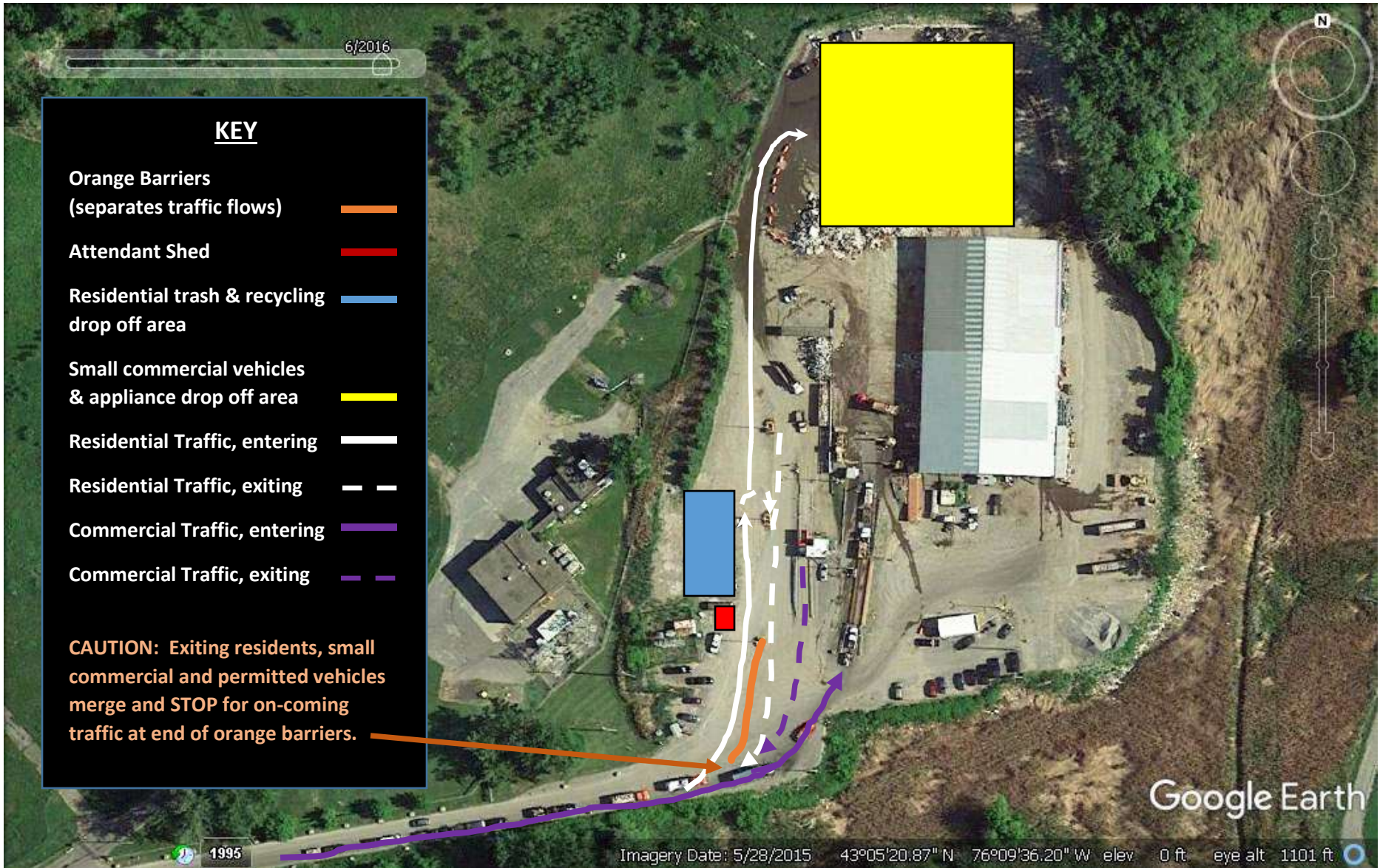


Ley Creek Transfer Station – 2019 New Traffic Pattern

5158 Ley Creek Drive, Liverpool • (315) 453-2866



ALL CUSTOMERS: Enter Ley Creek from 7th North Street. Watch for new signage directing traffic to split ahead.

RESIDENTIAL & SMALL COMMERCIAL VEHICLES: Bear left at the orange barriers. Stop at attendant shed for directions.

PERMITTED COMMERCIAL VEHICLES: Keep right of orange barriers and head to the inbound scale.